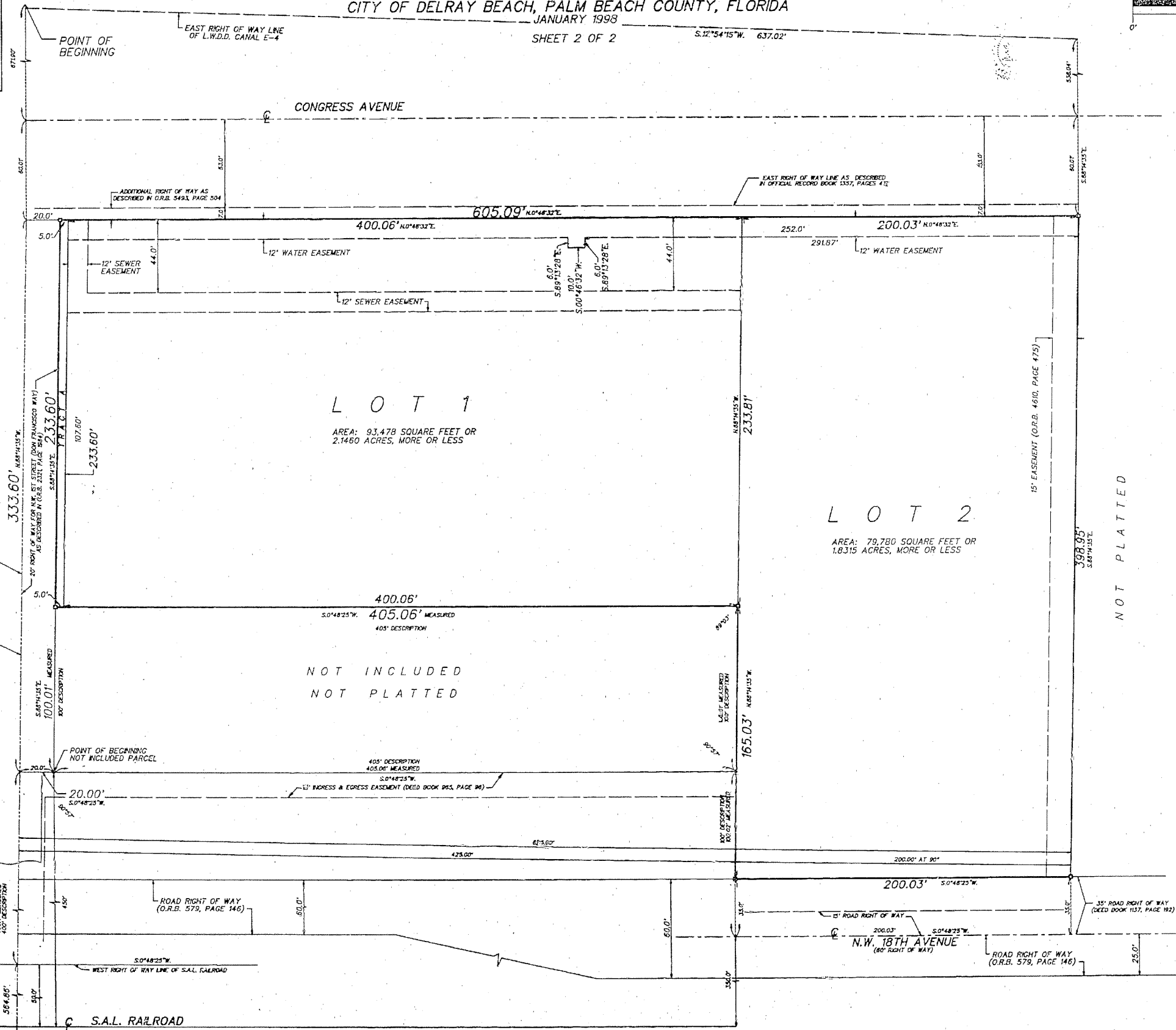
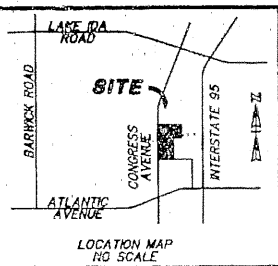
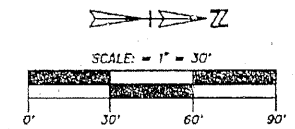


62

PLAT OF
CONGRESS INDUSTRIAL SQUARE
A PORTION OF THE NORTHEAST QUARTER (N.E.1/4)
OF SECTION 18, TOWNSHIP 46 SOUTH, RANGE 43 EAST,
CITY OF DELRAY BEACH, PALM BEACH COUNTY, FLORIDA
JANUARY 1998
SHEET 2 OF 2



NOTES:
CL = CENTERLINE
L.W.D.D. = LAKE WORTH DRAINAGE DISTRICT
O.R.B. = OFFICIAL RECORD BOOK
□ = SET PERMANENT REFERENCE MONUMENT #1314 (P.R.M.)
G.U.E. = GENERAL UTILITY EASEMENT
THE EAST RIGHT OF WAY LINE OF L.W.D.D. CANAL E-4 IS ASSUMED TO BEAR S.12°54'15\"W.

O'BRIEN, SUITER & O'BRIEN, INC.
LAND SURVEYORS
CERTIFICATE OF AUTHORIZATION #18353
SURVEYOR AND MAPPER IN CHARGE: JOHN N. SUITER
2601 NORTH FEDERAL HIGHWAY, DELRAY BEACH, FLORIDA 33483
(561) 276-4501 732-3279 FAX 276-2390

DATE	JAN. 1998	SCALE	1" = 30'
FIELD BOOK	D219	PAGE NO.	21
ORDER NO.	82-10-05-72		